



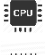
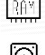




## INSTALLATION GUIDE

### Microsoft Office 365 Pro Plus

#### Windows/MacOS

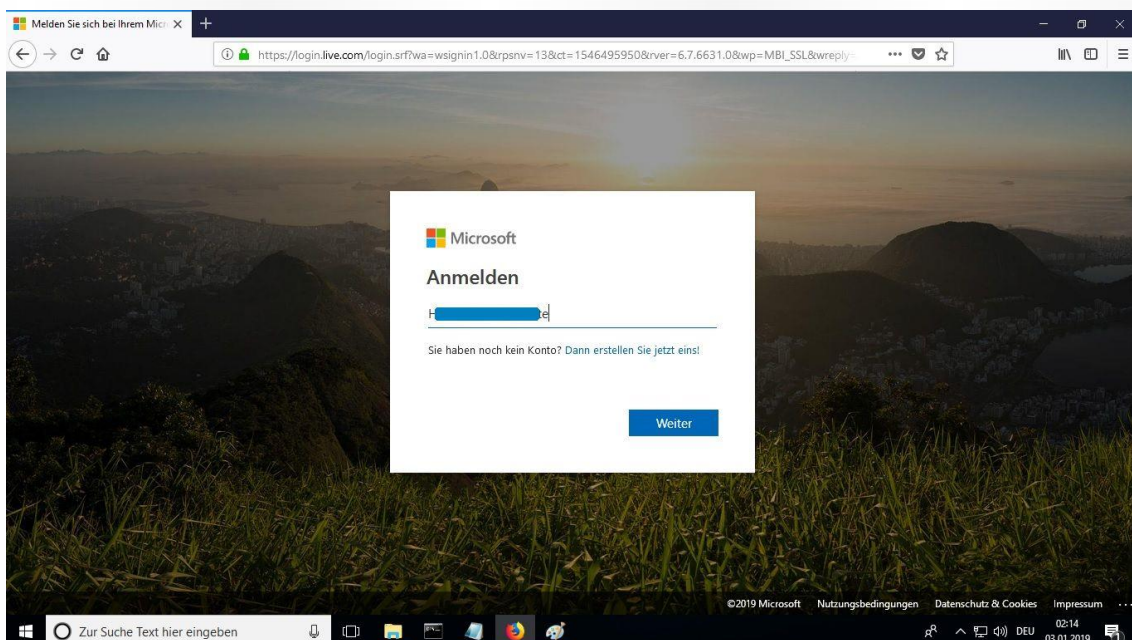
##### System Requirements:

-  macOS 10.12: Sierra (Fuji), macOS 10.13: High Sierra (Lobo), macOS 10.14: Mojave (Liberty)
-  Windows 7 (SP1) 8, 10, Windows Server 2008, 2012 R2. .NET Framework 3.5
-  1 gigahertz (GHz) or faster 32-bit (x86) or 64-bit (x64) processor\*
-  1 gigabyte (GB) RAM (32-bit) or 2 GB RAM (64-bit)
-  16 GB available hard disk space (32-bit) or 20 GB (64-bit)
-  DirectX 9 Graphics device with WDDM 1.0 or higher driver

The product you have purchased comes pre-enabled into a Microsoft Account, please follow these steps to take over the account and install the product on your computer/device:

1. Login: Go into the next Link and login using the **username and password** delivered to your email.

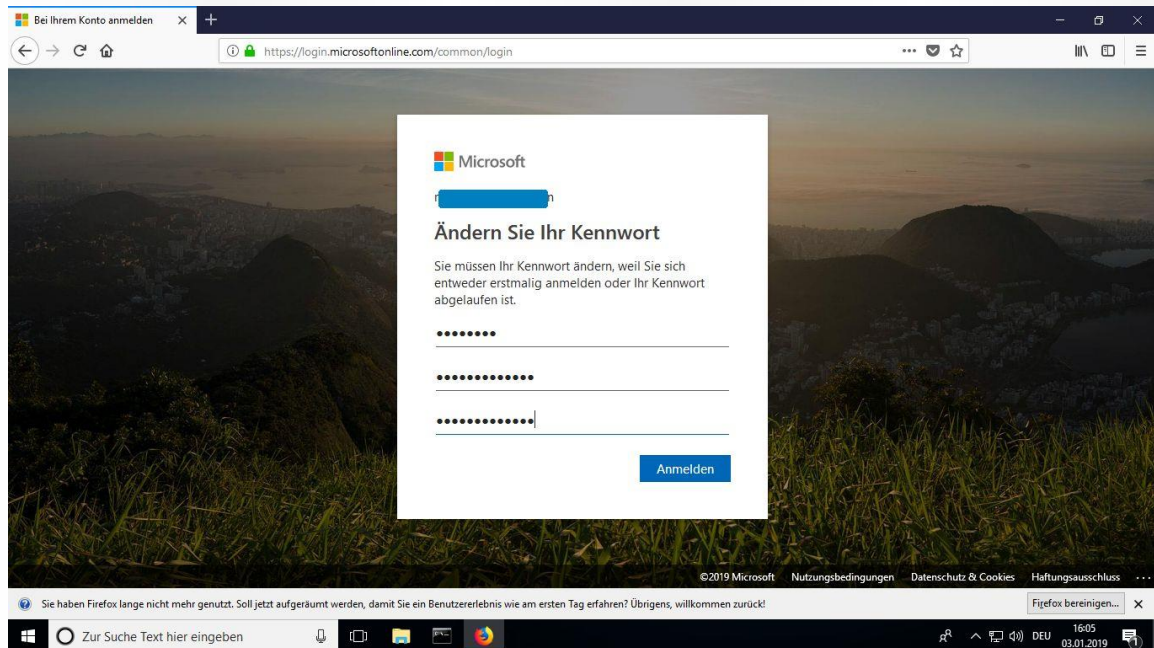
[Open Link](#)



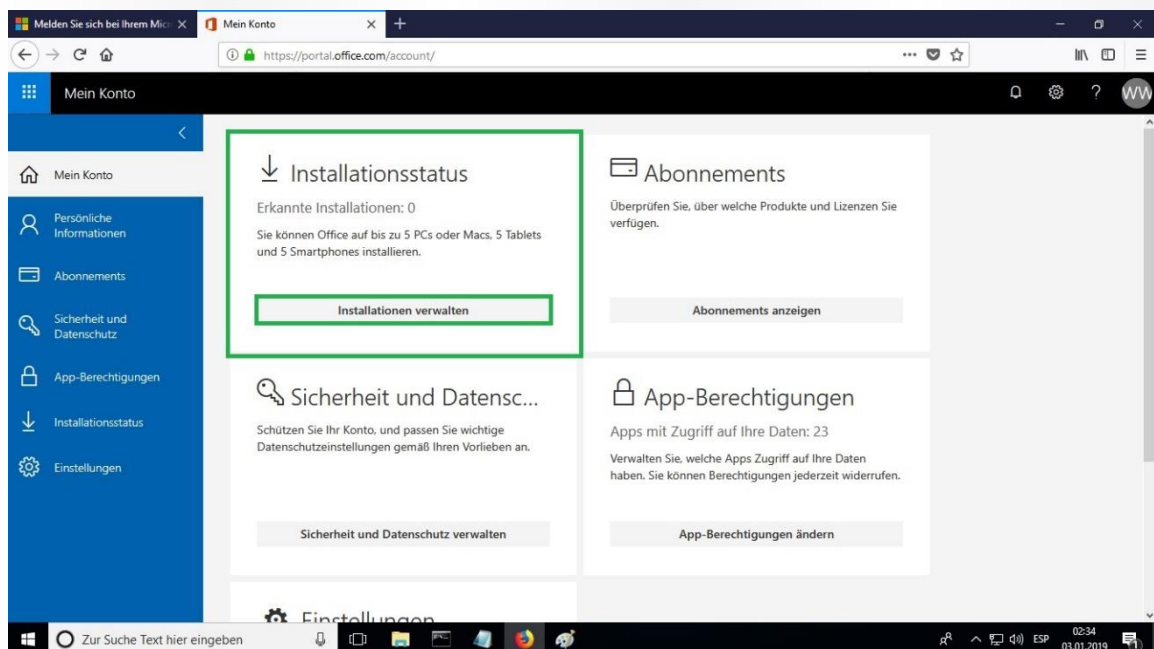


## INSTALLATION GUIDE

2. New Password: Apply a new password to take ownership of your purchased product. In the first field use the provided password via email, in the following two apply the new password of your choice. Make sure it is at least 8-digit long with at least one capital letter.



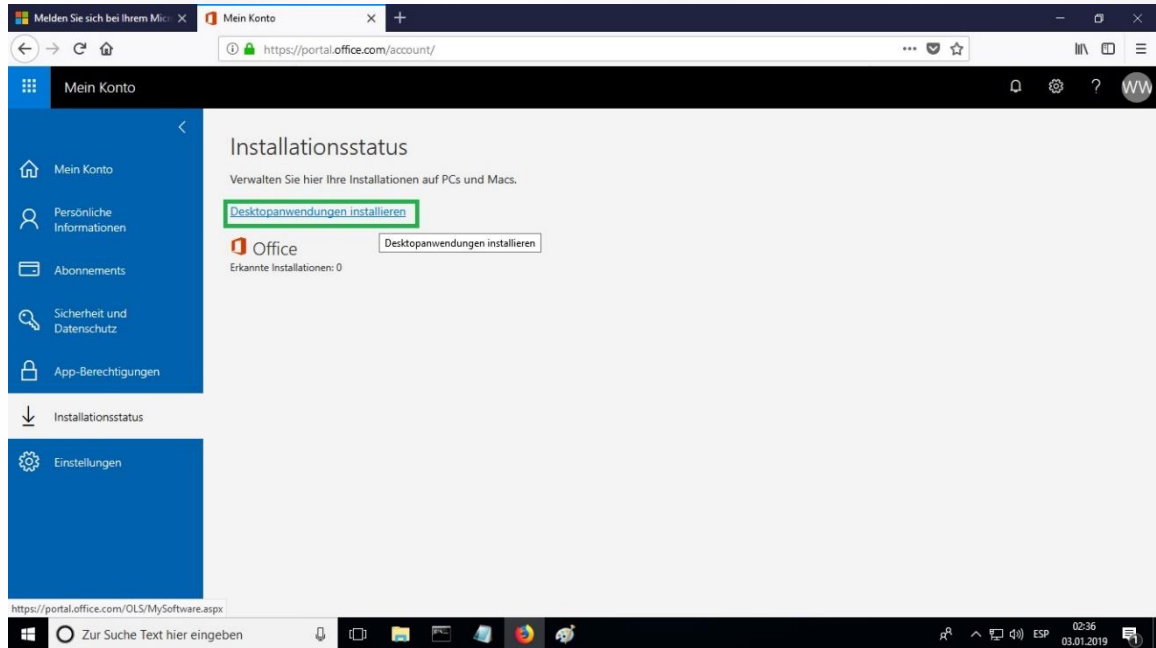
3. My Account: Once inside your account under "My Account", click on "Manage Installations" to begin the installation process.



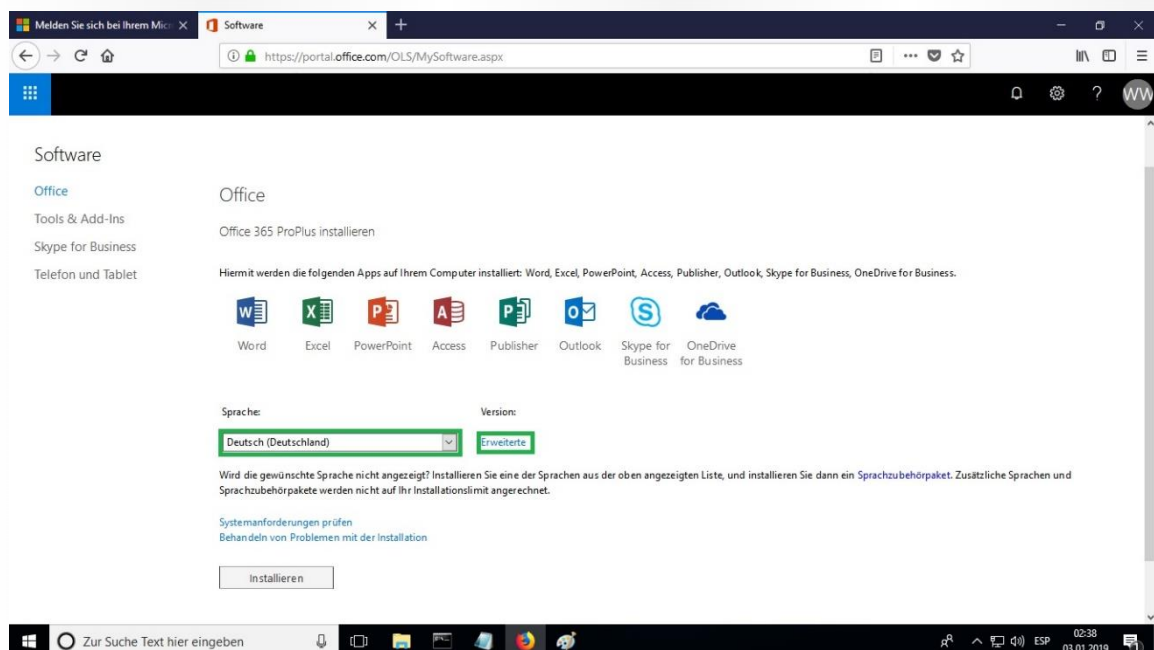


## INSTALLATION GUIDE

4. Installation Status: Under "Installation Status" click on "Install Desktop applications". This option will vary if you are installing the product into your tablet / mobile device.



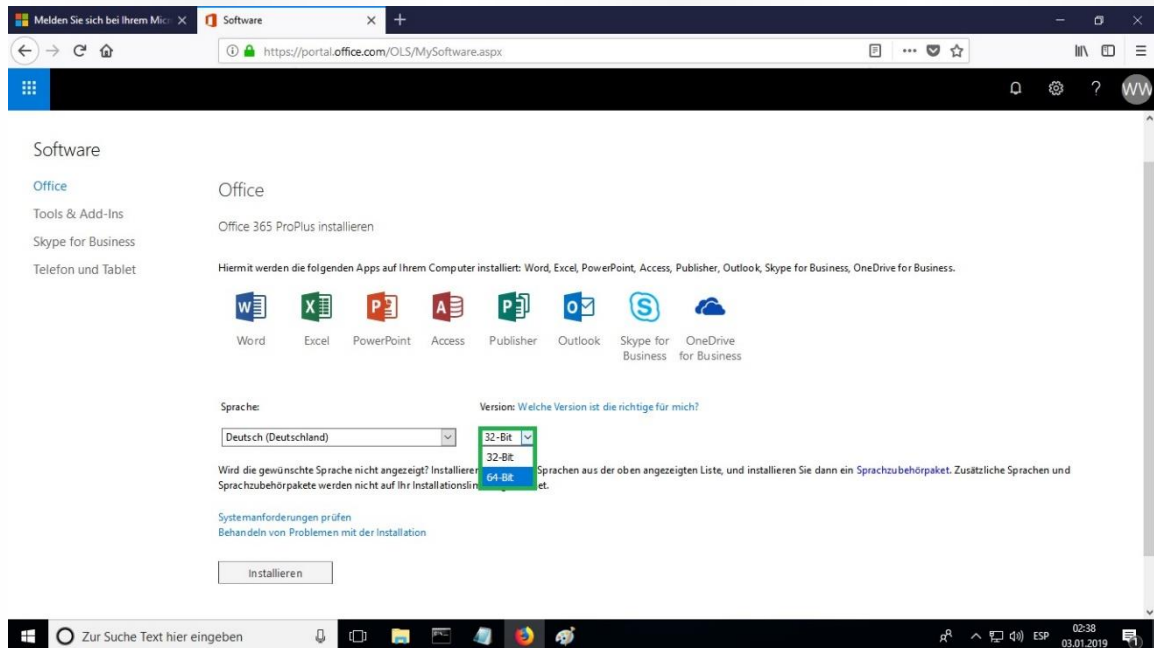
5. „Language“: Select your preferred language in the "language" drop down menu. The product will install by default in 32-bits version. If you wish to install the 64-bits version, please click on the "advanced" option.



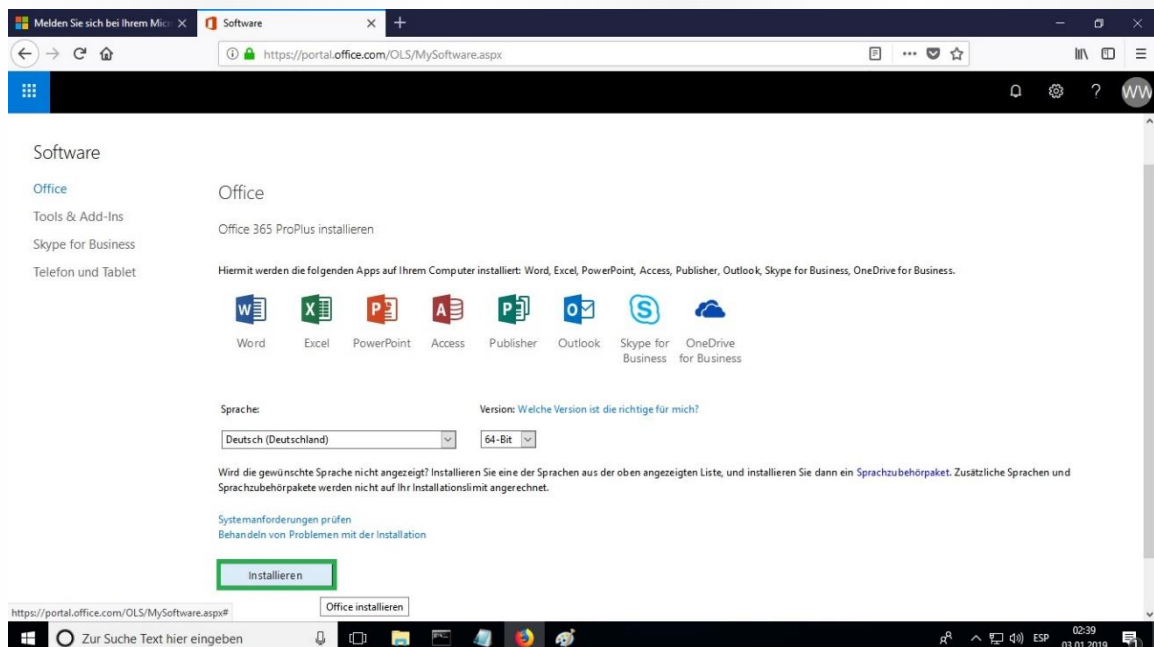


## INSTALLATION GUIDE

### 6. Select 32&64 Bit: Select the desired 32 or 64 bit version.



### 7. Install: After all desired options have been selected, click on "Install".

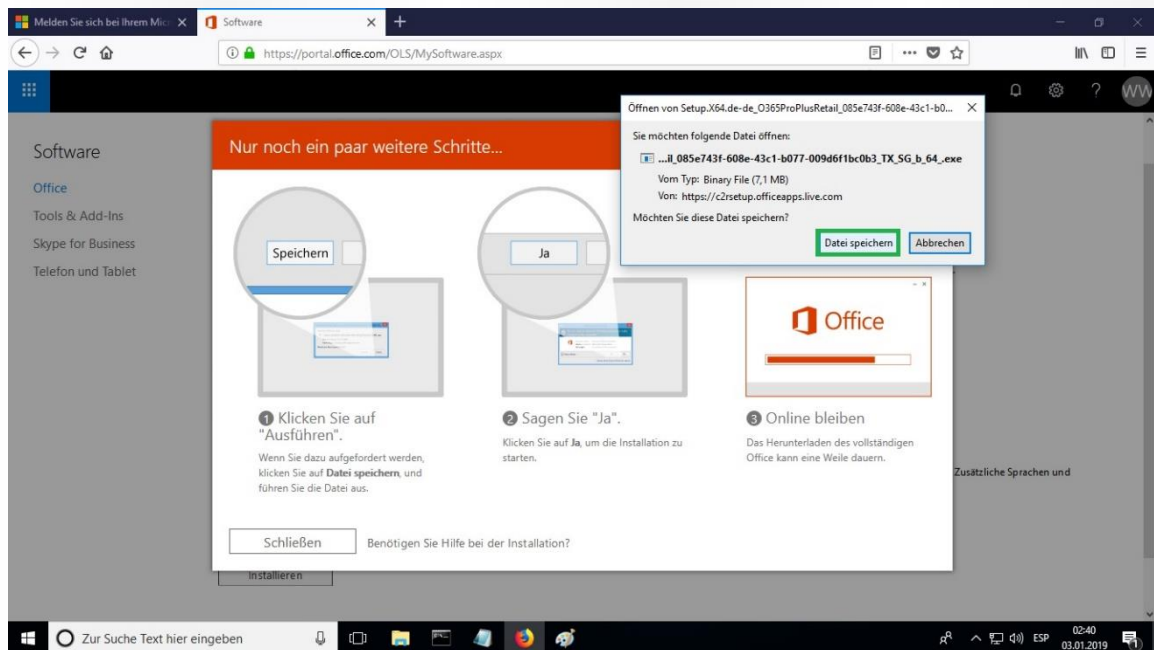




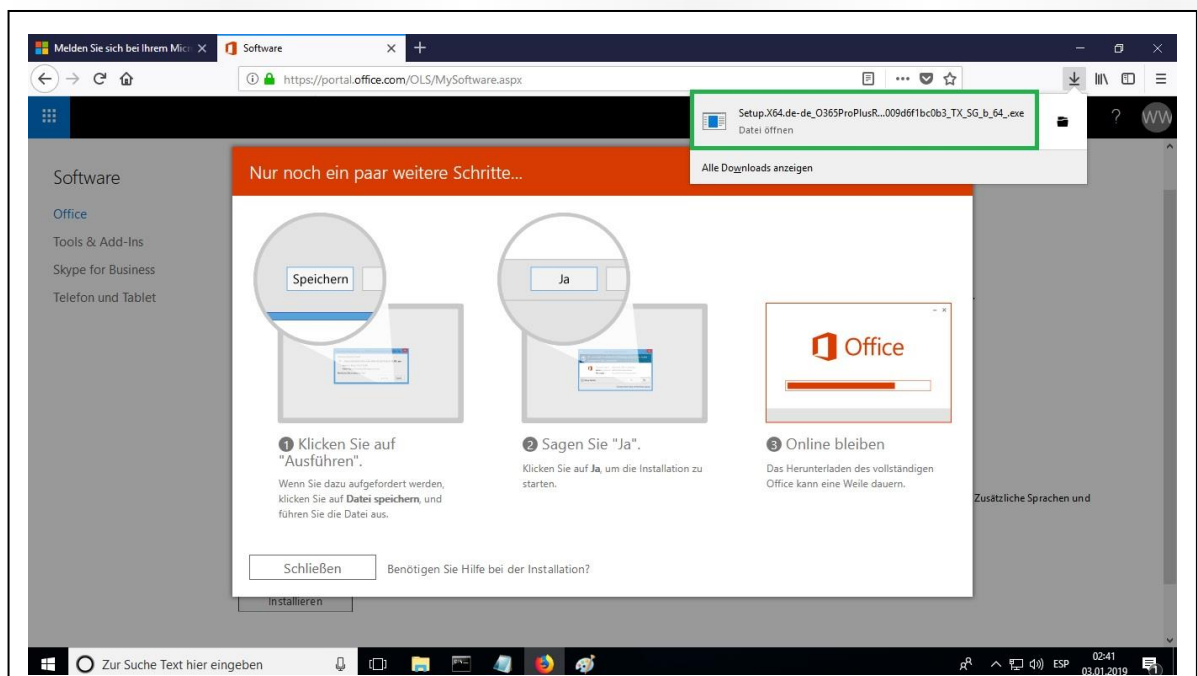


## INSTALLATION GUIDE

8. Save File: The Installer file will be downloaded, select "Save file" when prompted.



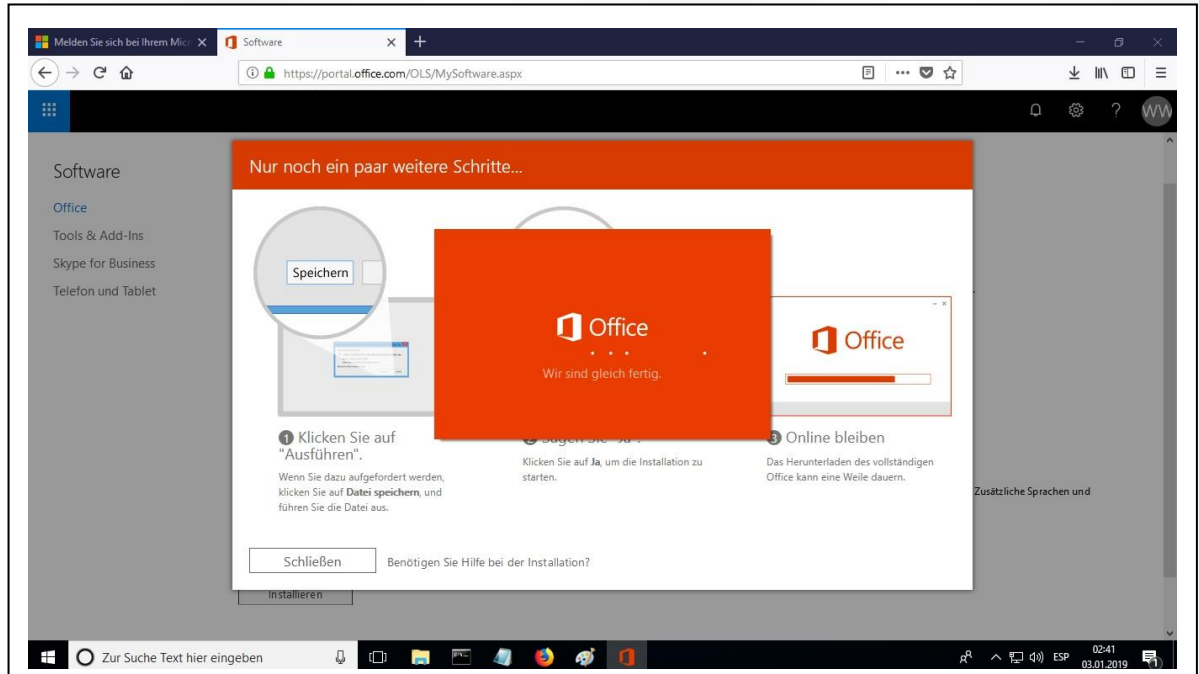
9. Open File: Once the file has been downloaded, double click on it to start it. Its location may differ depending on your browser.



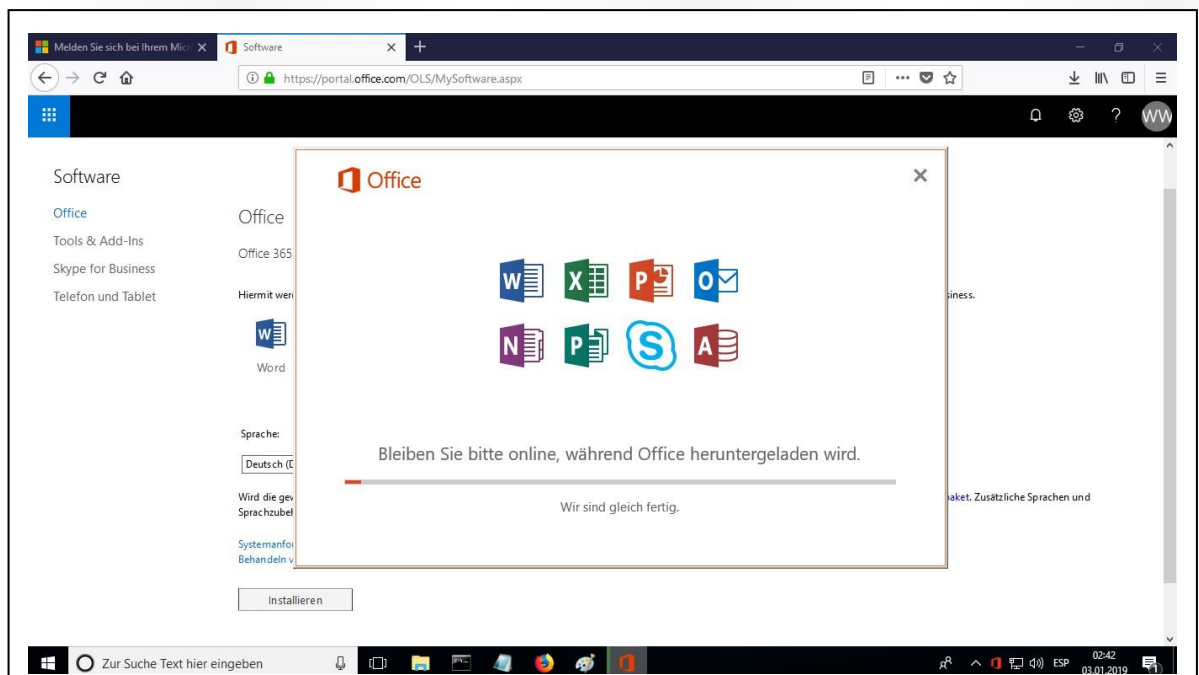


## INSTALLATION GUIDE

**10. Online Installation:** This will start the online installation process. Depending on your Internet connection it might take 30 or more minutes to finish.



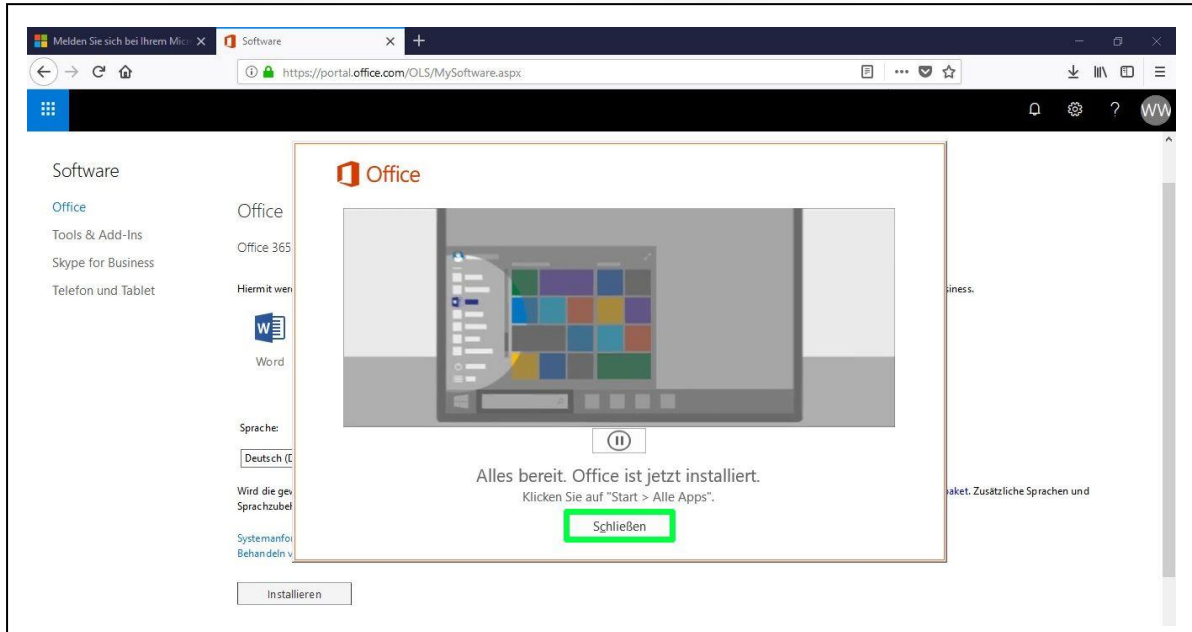
**11. Installation bar progress:** You will be able to verify the status with the installation bar progress.



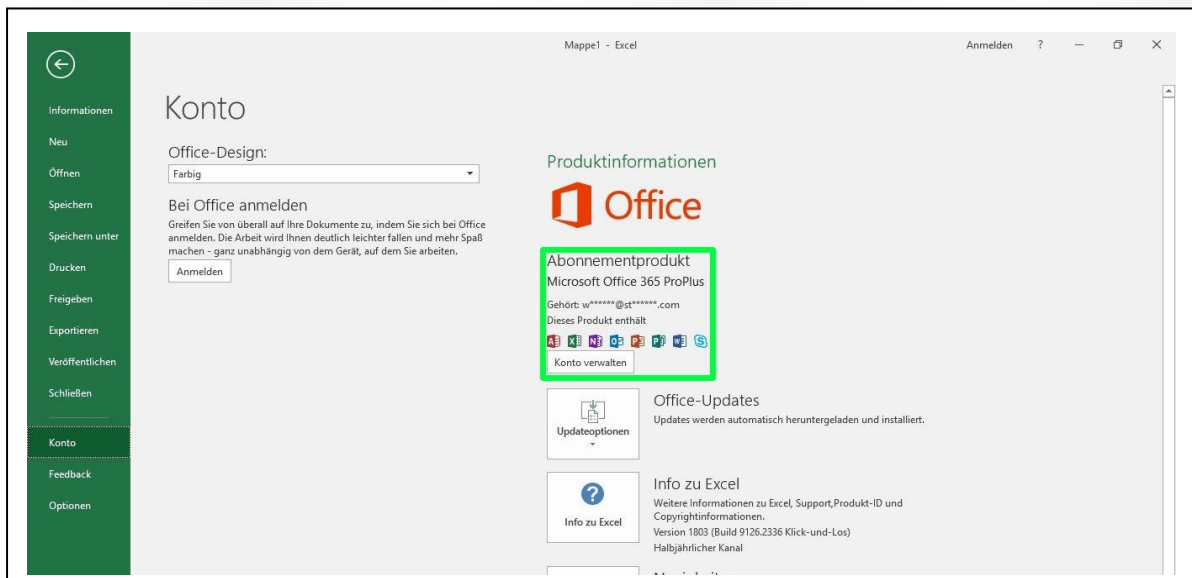


## INSTALLATION GUIDE

12. Close: Once installation is completed click on "Close". You should now be able to find your Office packages in your Start Menu or using the search option.



13. Verify subscription: In order to verify the subscription activation you can open any Office package like Excel and then go into File->Account. You will then see the Microsoft account associated to the product



**We wish you a successful installation. If you still have problems or questions about the installation, please contact our customer service at any time. We will help you as soon as possible.**